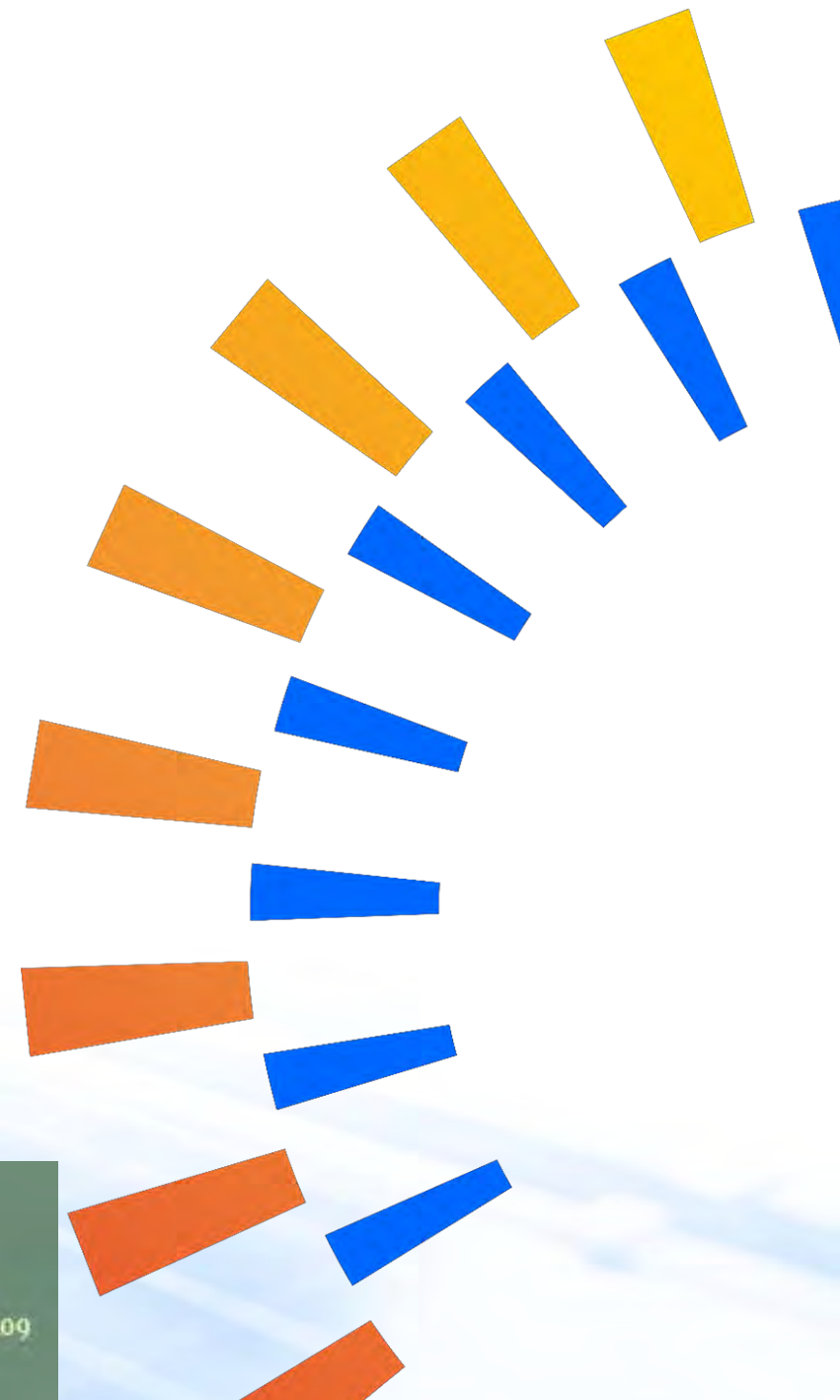


AgriPV system with climate, water and light spectrum control for safe, healthier and improved crops production



Selcuk Yerci



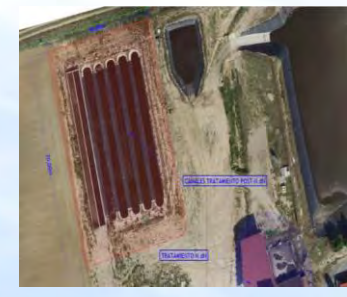
- 1 Users acceptability**
User requirements, AgriIoT platform interface, long-term engagement
- 2 Lab testing method**
Accelerated testing to evaluate spectral engineering impact on crops
- 3 System adaptability**
Luminescent glass-based colour converter design adapted to crops
- 4 Optimal Operation**
Proactive control for improved panels tilting and irrigation
- 5 Cost-benefit analysis**
Quantify direct and indirect benefits of system implementation and control
- 6 Resource efficiency**
Incremented reusability and control recyclability, circularity and
- 7 Financing models**
Public-private cooperation and crowdfunding campaign
- 8 Scalability & Replicability**
Business models, replication roadmap



Bursa – Turkiye
 Tomato & Green peas



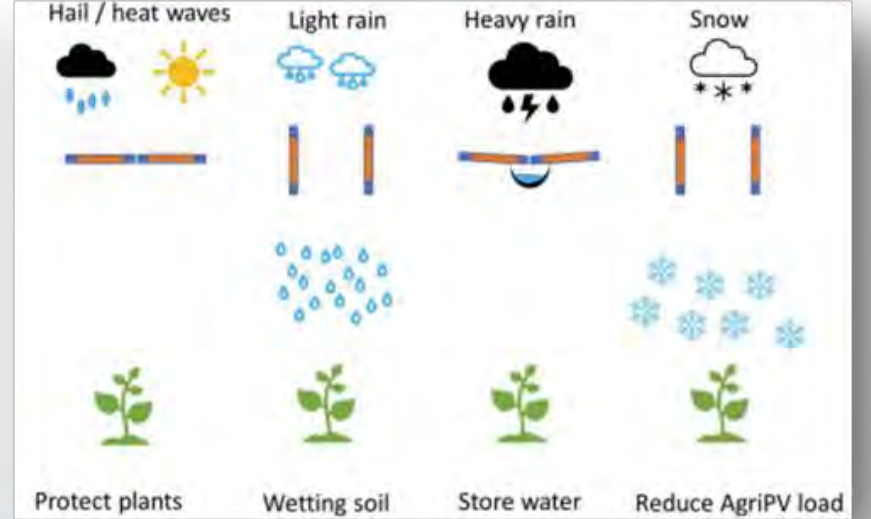
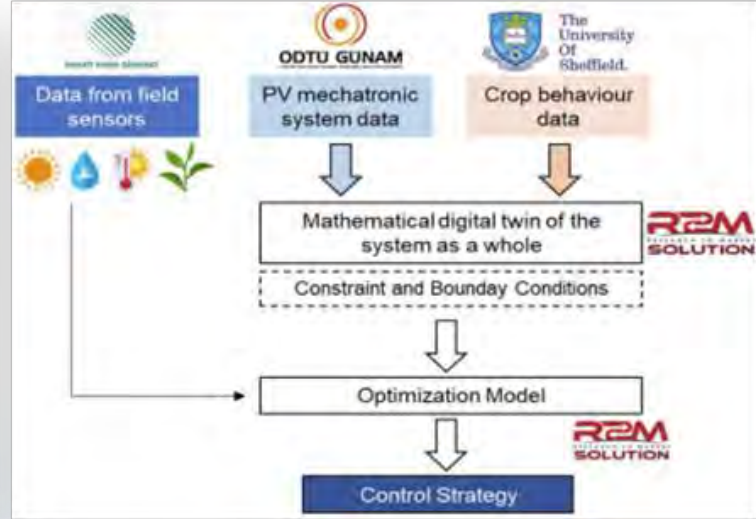
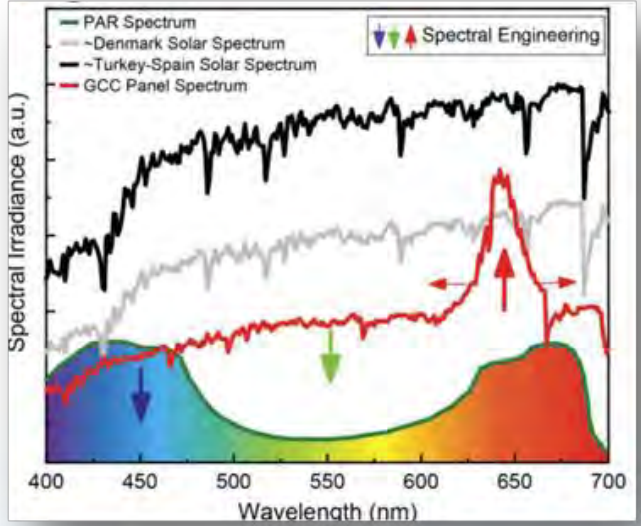
Avila – Spain
 MicroAlgae



Hoje Taastrup – Denmark
 Cress, Spinach, Lettuce,



- 1 Users acceptability**
User requirements, AgriOT platform interface, long-term engagement
- 2 Lab testing method**
Accelerated testing to evaluate spectral engineering impact on crops
- 3 System adaptability**
Luminescent glass-based colour converter design adapted to crops
- 4 Optimal Operation**
Proactive control for improved panels tilting and irrigation
- 5 Cost-benefit analysis**
Quantify direct and indirect benefits of system implementation and control
- 6 Resource efficiency**
Incremented reusability and recyclability, circularity and
- 7 Financing models**
Public-private cooperation, crowdfunding campaign,
- 8 Scalability & Replicability**
Business models, replication roadmap

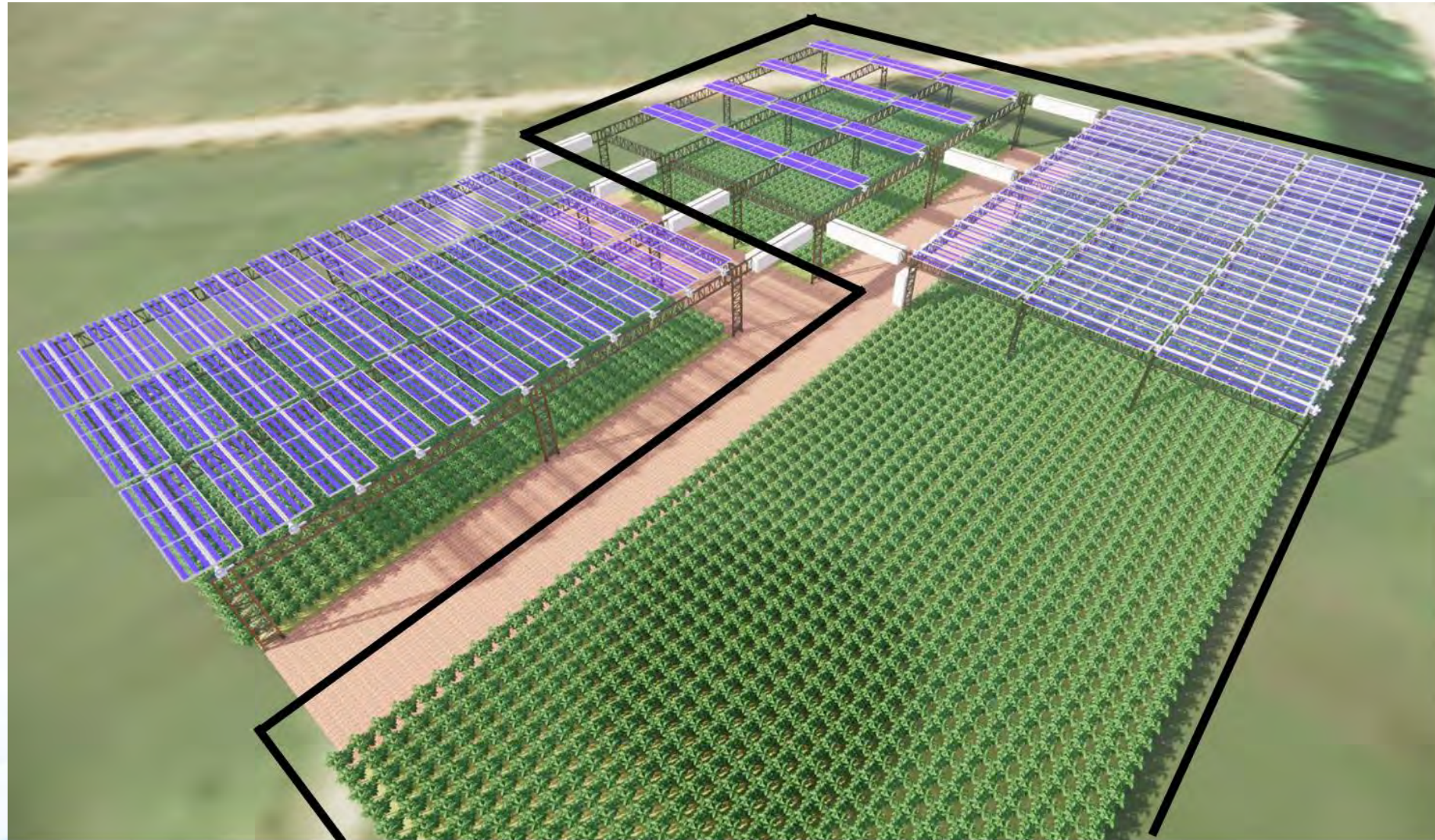


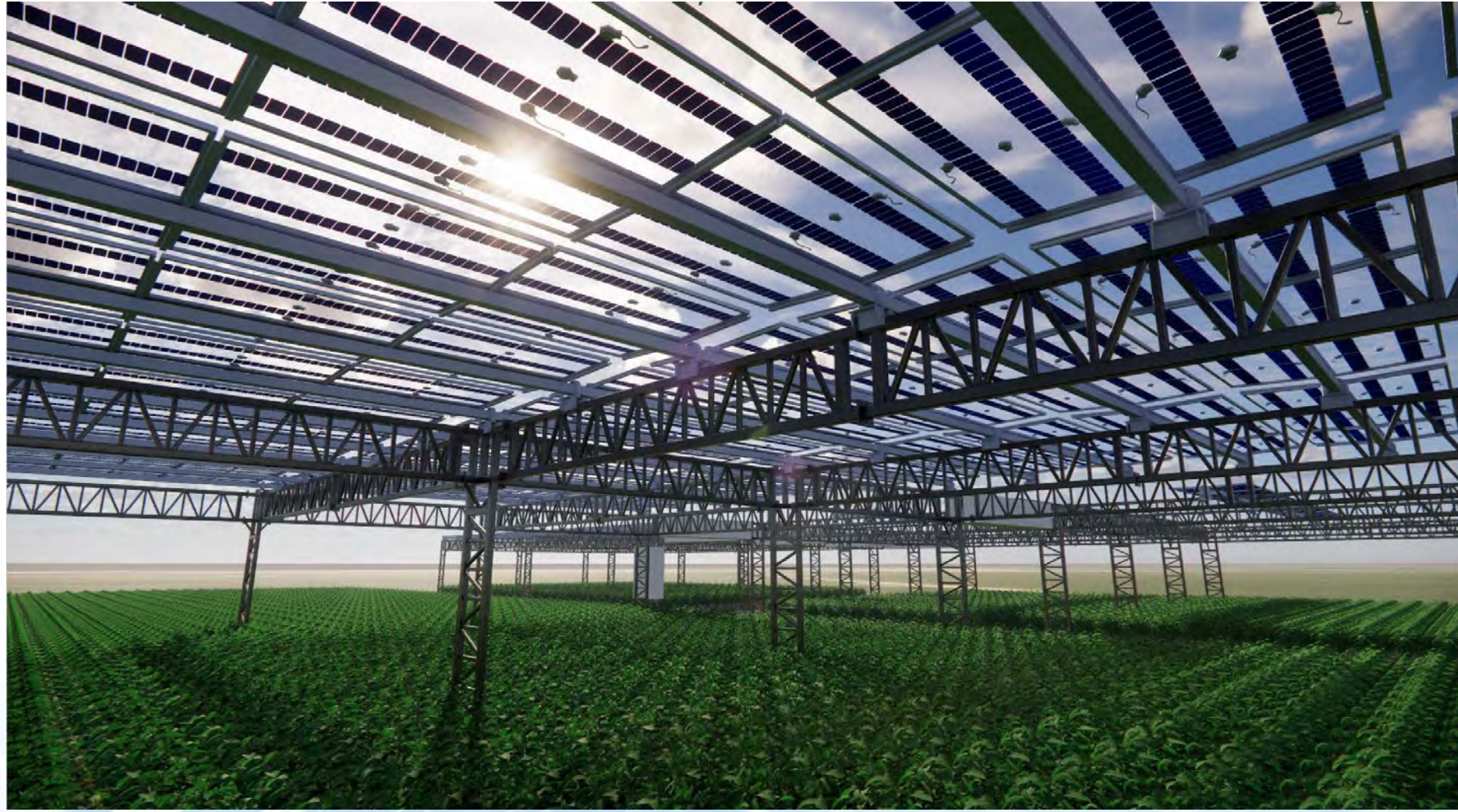
One field with the innovation

One reference field with no AgriPV

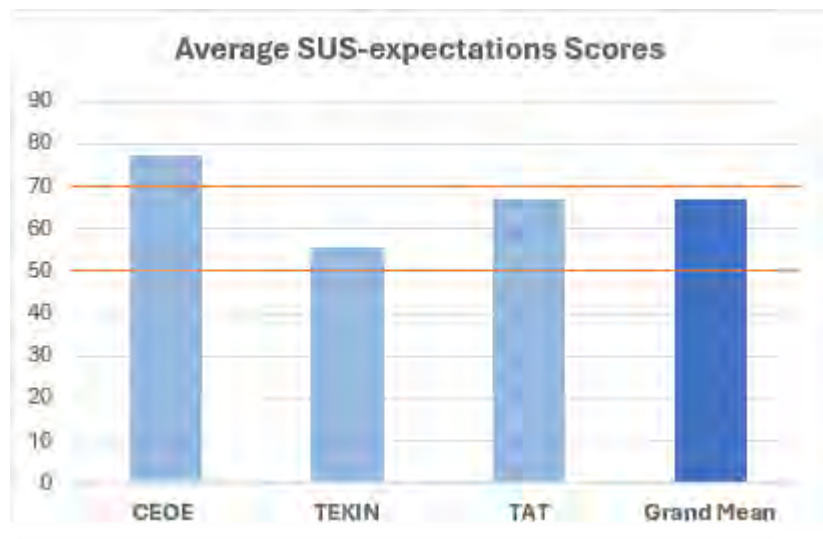
One reference field with standard PV panels

One reference field funded by another project



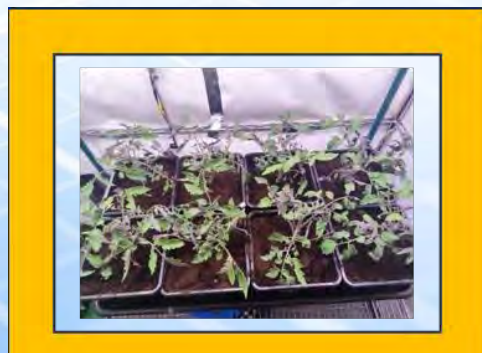
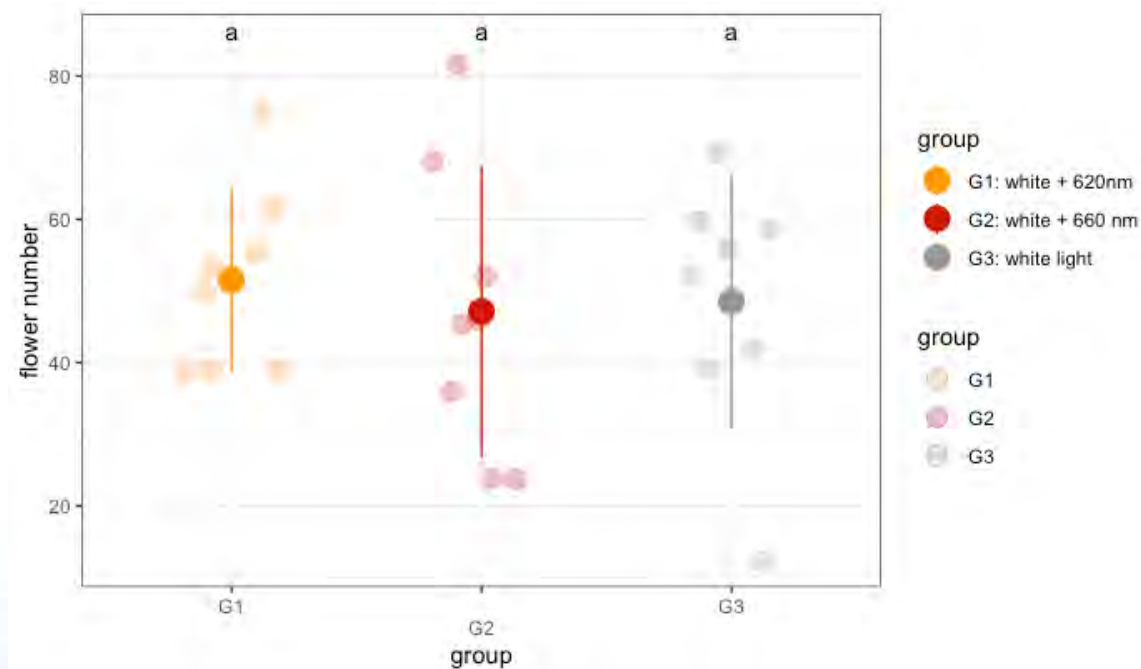


So far, stake holders are OK with the plan...



CEOE is in Acceptable Region, others are in Marginal Region (as defined by Bangor et al. (2009))

Advantage of enhanced red is not yet clear from our indoor experiments





Your Needs
Our Expertise
Sun's Power

Tailored power for a sustainable future



Science backed



Deep Customization



Competitive Pricing





Thank you!



Co-funded by the European Union Grant No: 101096409

This is an initiative of



**Co-funded by
the European Union**

Grant N°101096126. Views and opinions expressed are however those of the author(s) only and do not necessarily reflect those of the European Union or CINEA. Neither the European Union nor the granting authority can be held responsible for them.

Project funded by



Schweizerische Eidgenossenschaft
Confédération suisse
Confederazione Svizzera
Confederaziun svizra

Swiss Confederation

Federal Department of Economic Affairs,
Education and Research EAER
**State Secretariat for Education,
Research and Innovation SERI**